

BATEMAN

PRODUCT GUIDE



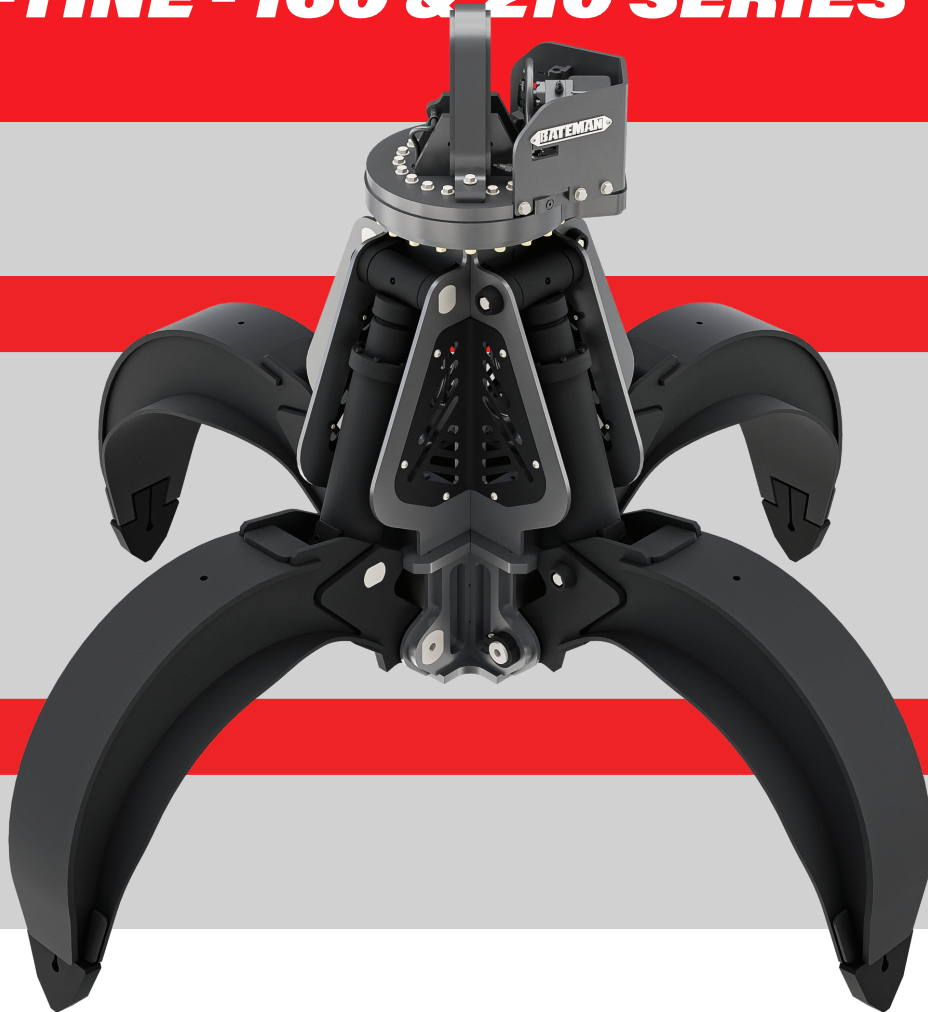
BATEMAN

GRYB

MATERIAL HANDLING

ORANGE PEEL GRAPPLE

FOUR-TINE - 160 & 210 SERIES



Work with increased confidence with BATEMAN's all-new, award-winning 160 & 210 series available in four-tine, five-tine, and magnet grapple configurations. Our new grapples are built to be the toughest in the industry with the ferrous metal sorting capabilities of a magnet. With improved designs for greater impact protection, longer life, and optimized work time, our grapples have been reengineered to take power and precision further than ever.

**DESIGNED
FOR A
BRAND-NEW,
BOLDER
EXPERIENCE.**

ORANGE PEEL GRAPPLE FOUR-TINE - 160 & 210 SERIES



Improved rotator guarding for greater impact protection.

Newly designed double wall cylinders include return oil channel, eliminating exposed hoses and risk of damage. Now with fully enclosed cylinder guards, zero chrome exposure.

More robust body for durability and greater cylinder protection as well as a thicker frame design for better pin support and hose guarding.

Larger pin diameter and improved bushing design with seals for longer life and optimized work time.

Improved tine design for optimal scrap penetration and material collection. Thicker, superior design with hardfacing on the tip area for durability.

160 SERIES FOUR-TINE ORANGE PEEL SCRAP GRAPPLE

MODEL	CAPACITY YD ³ /M ³	WEIGHT LBS (KG)	TIP-TO-TIP WIDTH (OPEN TINES) IN (MM)	HEIGHT (OPEN TINES) IN (MM)	HEIGHT (CLOSED TINES) IN (MM)
B4T16-050SC	0.5 / 0.40	3,090 (1,402)	71 (1,809)	74 (1,881)	84 (2,132)
B4T16-075SC	0.75 / 0.55	3,180 (1,442)	80 (2,039)	76 (1,923)	89 (2,254)
B4T16-100SC	1 / 0.75	3,340 (1,515)	91 (2,308)	78 (1,971)	94 (2,397)
B4T16-125SC	1.25 / 0.95	3,490 (1,583)	99 (2,525)	79 (2,011)	99 (2,513)
B4T16-150SC	1.5 / 1.15	3,640 (1,651)	106 (2,704)	80 (2,044)	103 (2,608)

210 SERIES FOUR-TINE ORANGE PEEL SCRAP GRAPPLE

MODEL	CAPACITY YD ³ /M ³	WEIGHT LBS (KG)	TIP-TO-TIP WIDTH (OPEN TINES) IN (MM)	HEIGHT (OPEN TINES) IN (MM)	HEIGHT (CLOSED TINES) IN (MM)
B4T210-125SC	1.25 (1)	4,830 (2,191)	100 (2,527)	88 (2,181)	107 (2,705)
B4T210-150SC	1.5 (1.15)	4,900 (2,223)	106 (2,607)	86 (2,192)	108 (2,746)
B4T210-200SC	2 (1.5)	5,250 (2,381)	117 (2,965)	88 (2,181)	115 (2,929)
B4T210-250SC	2.5 (1.9)	5,500 (2,495)	130 (3,310)	90 (2,278)	122 (3,105)
B4T210-300SC	3 (2.3)	5,700 (2,585)	138 (3,507)	91 (2,302)	126 (3,206)

BATEMAN

GRYB

MATERIAL HANDLING

ORANGE PEEL GRAPPLE

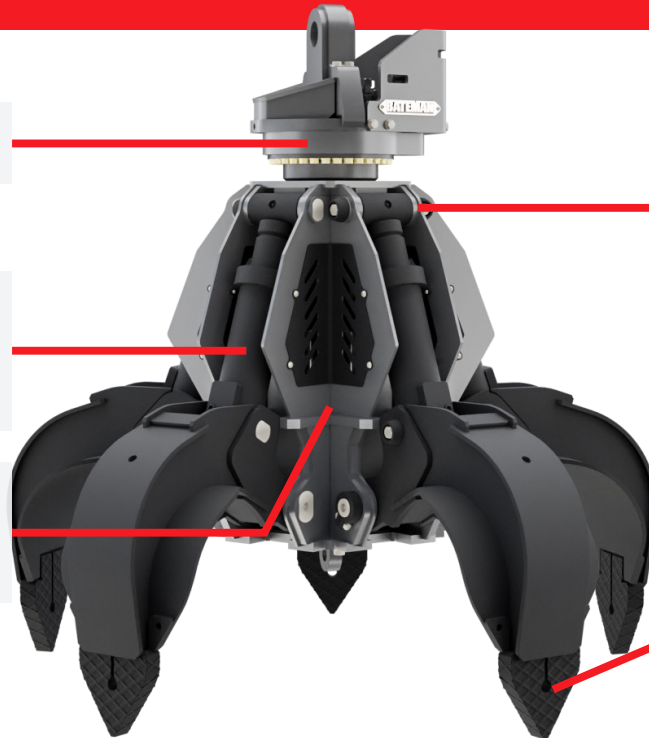
FIVE-TINE - 160 & 210 SERIES



Work with increased confidence with BATEMAN's all-new, award-winning 160 & 210 series available in four-tine, five-tine, and magnet grapple configurations. Our new grapples are built to be the toughest in the industry with the ferrous metal sorting capabilities of a magnet. With improved designs for greater impact protection, longer life, and optimized work time, our grapples have been reengineered to take power and precision further than ever.

**DESIGNED
FOR A
BRAND-NEW,
BOLDER
EXPERIENCE.**

ORANGE PEEL GRAPPLE FIVE-TINE - 160 & 210 SERIES



Improved rotator guarding for greater impact protection.

Newly designed double wall cylinders include return oil channel, eliminating exposed hoses and risk of damage. Now with fully enclosed cylinder guards, zero chrome exposure.

More robust body for durability and greater cylinder protection as well as a thicker frame design for better pin support and hose guarding.

Larger pin diameter and improved bushing design with seals for longer life and optimized work time.

Improved tine design for optimal scrap penetration and material collection. Thicker, superior design with hardfacing on the tip area for durability.

160 SERIES FIVE-TINE ORANGE PEEL SCRAP GRAPPLE

MODEL	CAPACITY YD ³ /M ³	WEIGHT LBS (KG)	TIP-TO-TIP WIDTH (OPEN TINES) IN (MM)	HEIGHT (OPEN TINES) IN (MM)	HEIGHT (CLOSED TINES) IN (MM)
B5T16-050SC	0.5 / 0.40	3,680 (1,669)	71 (1,810)	74 (1,881)	84 (2,132)
B5T16-075SC	0.75 / 0.55	3,810 (1,728)	80 (2,040)	76 (1,923)	89 (2,255)
B5T16-100SC	1 / 0.75	4,010 (1,819)	90 (2,308)	78 (1,972)	94 (2,398)
B5T16-125SC	1.25 / 0.95	4,210 (1,910)	100 (2,526)	79 (2,011)	99 (2,514)
B5T16-150SC	1.5 / 1.15	4,420 (2,005)	106 (2,704)	80 (2,043)	103 (2,609)

210 SERIES FIVE-TINE ORANGE PEEL SCRAP GRAPPLE

MODEL	CAPACITY YD ³ /M ³	WEIGHT LBS (KG)	TIP-TO-TIP WIDTH (OPEN TINES) IN (MM)	HEIGHT (OPEN TINES) IN (MM)	HEIGHT (CLOSED TINES) IN (MM)
B5T210-125SC	1.25 (1)	5,775 (2,619)	101 (2,558)	87 (2,204)	107 (2,705)
B5T210-150SC	1.5 (1.15)	5,840 (2,649)	104 (2,638)	87 (2,204)	109 (2,763)
B5T210-200SC	2 (1.5)	6,290 (2,853)	118 (2,996)	89 (2,258)	116 (2,947)
B5T210-250SC	2.5 (1.9)	6,615 (3,001)	132 (3,342)	91 (2,300)	123 (3,125)
B5T210-300SC	3 (2.3)	6,845 (3,105)	139 (3,538)	92 (2,335)	127 (3,227)

BATEMAN

GRYB

MATERIAL HANDLING

ORANGE PEEL GRAPPLE

MAGNET GRAPPLE - 160 & 210 SERIES



Work with increased confidence with BATEMAN's all-new, award-winning 160 & 210 series available in four-tine, five-tine, and magnet grapple configurations. Our new grapples are built to be the toughest in the industry with the ferrous metal sorting capabilities of a magnet. With improved designs for greater impact protection, longer life, and optimized work time, our grapples have been reengineered to take power and precision further than ever.

**DESIGNED
FOR A
BRAND-NEW,
BOLDER
EXPERIENCE.**

ORANGE PEEL GRAPPLE MAGNET GRAPPLE - 160 & 210 SERIES



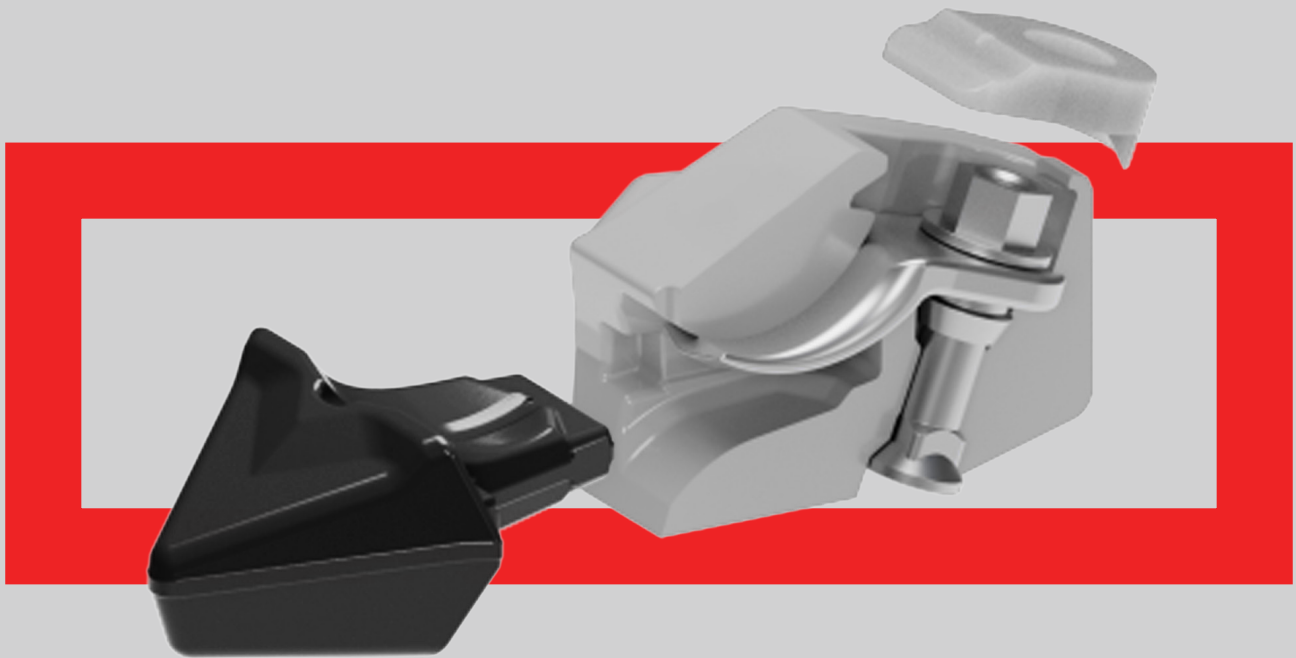
160 SERIES MAGNET ORANGE PEEL SCRAP GRAPPLE

MODEL	CAPACITY YD ³ /M ³	MAGNET DIA. IN (MM)	WEIGHT LBS (KG)	TIP-TO-TIP WIDTH (OPEN TINES) IN (MM)	HEIGHT (OPEN TINES) IN (MM)	HEIGHT (CLOSED TINES) IN (MM)
BMG16-075-M30	0.75 / 0.55	30 (762)	4,760 (2,159)	99 (2,513)	67 (1,713)	94 (2,377)
BMG16-075-M36	0.75 / 0.55	36 (914)	4,950 (2,245)	99 (2,513)	67 (1,713)	94 (2,377)
BMG16-100-M30	1 / 0.75	30 (762)	4,820 (2,186)	106 (2,693)	68 (1,724)	97 (2,469)
BMG16-100-M36	1 / 0.75	36 (914)	5,020 (2,277)	106 (2,693)	68 (1,724)	97 (2,469)
BMG16-125-M36	1.25 / 0.95	36 (914)	5,140 (2,331)	113 (2,870)	72 (1,829)	104 (2,642)
BMG16-125-M40	1.25 / 0.95	40 (1,016)	6,000 (2,722)	113 (2,870)	68 (1,724)	101 (2,561)

210 SERIES MAGNET ORANGE PEEL SCRAP GRAPPLE

MODEL	CAPACITY YD ³ /M ³	MAGNET DIA. IN (MM)	WEIGHT LBS (KG)	TIP-TO-TIP WIDTH (OPEN TINES) IN (MM)	HEIGHT (OPEN TINES) IN (MM)	HEIGHT (CLOSED TINES) IN (MM)
BMG210-125-M40	1.25 / 0.95	40	7,700	120	79.5	113
BMG210-150-M40	1.5	40	7,750	124	80	115
BMG210-150-M44	1.5	44	8,250	124	80	115
BMG210-200-M40	2	40	8,200	138	80	122
BMG210-200-M44	2	44	8,600	138	80	122
BMG210-200-M48	2	48	8,850	138	80	122

REPLACEABLE GRAPPLE TIPS



Bateman offers replaceable tips for our grapples — extending service life, reducing downtime, and simplifying maintenance. Built for durability and performance, they feature a patented lock mechanism for a secure fit and quick replacement.

With proven increased tooth life and lower operating costs, Bateman's replaceable tips can be swapped out in just minutes with a quick bolt removal — eliminating the need for days of cutting and welding.

**TOOTH****SOCKET****LATCH****NUT****BOLT****COVER**

Proven performance

Reduces maintenance costs

No more downtime for welding tips

Quick and easy replacement



**VIEW TIP
REPLACEMENT
IN ACTION**



SHIPS GEAR GRAPPLE



The Bateman Ships Gear Diesel Hydraulic Grapple is built for efficient, high-capacity material handling in port operations. As one of the only suppliers offering a 170 HP model, it delivers faster cycle times and can handle up to 13 cubic yards per grab—helping eliminate the need for a separate material handler and reducing capital costs.

Available in a six-tine configuration, with a new 74 HP five-tine option, each unit comes standard with quick hitch tines for easier transport. We also maintain a strong inventory of replacement parts to support uptime.

Bateman customers have the lowest demergering fees.

Easy access and availability for spare parts.

Heavy duty tines.

Ultimate cylinder protection.

Leak free with split flange fittings.

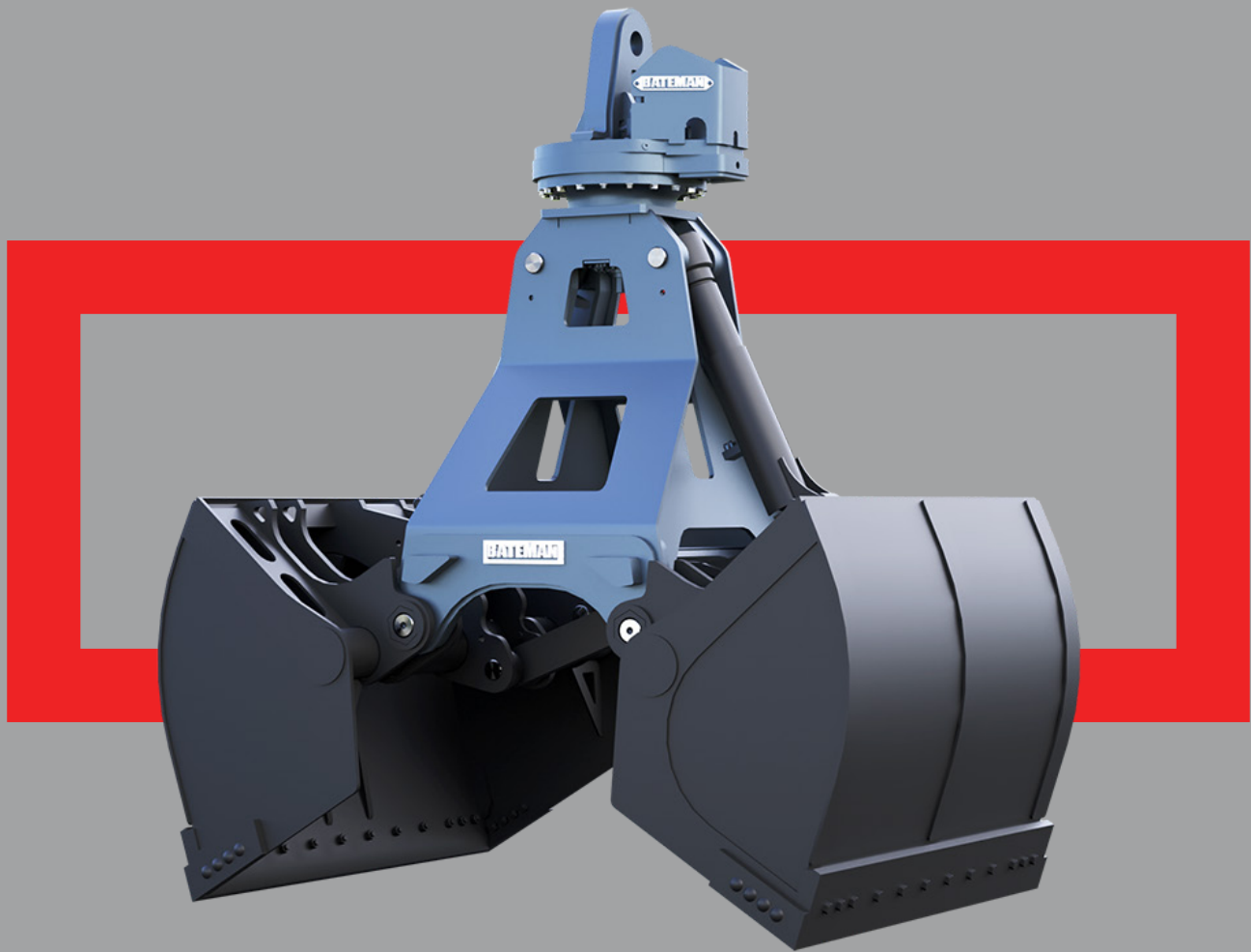
Easy engine and pump access.

Comes with quick hitch tines, allowing for fast removal of the tines to simplify grapple transport.

SHIPS GEAR GRAPPLE



MODEL		B5TD-920FC	B6TD-1000FC	B6TD-1300FC
Engine		74HP, TIER 4	95HP, TIER 3 ONLY	170HP, JCB TIER 4, STAGE V
Number of Tines		5	6	6
Max Opening	IN (MM)	186 (4,724)	203 (5,156)	209 (5,309)
Width	IN (MM)	200 (5,080)	219 (5,563)	234 (5,944)
Height Open	IN (MM)	131 (3,327)	146 (3,708)	168 (4,267)
Volume	YD ³ (M ³)	9.2 (7)	10 (8)	13 (10)
Height Closed	IN (MM)	152 (3,861)	170 (4,318)	182 (4,623)
Weight	LBS (KG)	17,000 (7,711)	28,000 (12,701)	32,000 (12,515)



BATEMAN

CLAMSHELL BUCKET

Bateman Clamshell Buckets provide the best solution for loading, re-handling & digging. Our Hydraulic Clamshell Buckets come in light, medium & heavy-duty models with either open or closed back designs.

Heavy-Duty Bearing Rotators.

360 Degrees of Continuous Rotation.

High-Abrasion Resistant Alloy Steel on Leading Edges.

Bolt-on Edges for Extra Wear Protection.

BCS10

MEDIUM/LIGHT

CAPACITY YD ³	WIDTH IN	ESTIMATED GA WEIGHT LBS	NO. OF CYLINDERS	CYLINDER BORE	MATERIAL DENSITY
1/2	24	TBD	2	3	Medium density
3/4	24	TBD	2	3	Medium density
1	36	TBD	2	3	Medium density
1 1/4	36	TBD	2	3	Medium density

Weight is subject to change. Optional bolt-on edges and side cutters available.

BCS15

MEDIUM/LIGHT

CAPACITY YD ³	WIDTH IN	ESTIMATED GA WEIGHT LBS	NO. OF CYLINDERS	CYLINDER BORE	MATERIAL DENSITY
1	48	TBD	2	3.5	Low density
1 1/4	48	TBD	2	3.5	Low density
1 1/2	48	TBD	2	3.5	Low density
2	48	TBD	2	3.5	Low density
2 1/2	60	TBD	2	3.5	Low density
3	60	TBD	2	3.5	Low density

Weight is subject to change. Optional bolt-on edges and side cutters available.

MEDIUM

CAPACITY YD ³	WIDTH IN	ESTIMATED GA WEIGHT LBS	NO. OF CYLINDERS	CYLINDER BORE	MAX MATERIAL DENSITY LBS/FT ³ (LBS/YRD)
1	48	3,800	2	3.5	55 (1,500)
1 1/2	48	4,050	2	3.5	55 (1,500)
2	48	4,200	2	3.5	55 (1,500)
2 1/2	60	4,400	2	3.5	55 (1,500)
3	60	4,500	2	3.5	55 (1,500)

Weight is subject to change. Bolt-on edges and side cutters included.

HEAVY-HDO/SCALLOPED

CAPACITY YD ³	WIDTH IN	ESTIMATED GA WEIGHT LBS	NO. OF CYLINDERS	CYLINDER BORE	MAX MATERIAL DENSITY LBS/FT ³ (LBS/YRD)
1	48	4,000	2	3.5	130 (3,500)
1 1/2	48	4,200	2	3.5	130 (3,500)
2	48	4,400	2	3.5	130 (3,500)
2 1/2	60	4,600	2	3.5	130 (3,500)
3	60	5,000	2	3.5	130 (3,500)

Weight is subject to change. Bolt-on edges and side cutters included.

BCS2

MEDIUM/LIGHT

CAPACITY YD ³	WIDTH IN	ESTIMATED GA WEIGHT LBS	NO. OF CYLINDERS	CYLINDER BORE	MATERIAL DENSITY
2	48	TBD	2	4	Low density
2 1/2	48	TBD	2	4	Low density
3	60	TBD	2	4	Low density
3 1/2	60	TBD	2	4	Low density
4	72	TBD	2	5	Low density
4 1/2	72	TBD	2	5	Low density
5	84	TBD	2	5	Low density
5 1/2	84	TBD	2	5	Low density
6	84	TBD	2	5	Low density

Weight is subject to change. Bolt-on edges available in option.

MEDIUM

CAPACITY YD ³	WIDTH IN	ESTIMATED GA WEIGHT LBS	NO. OF CYLINDERS	CYLINDER BORE	MAX MATERIAL DENSITY LBS/FT ³ (LBS/YRD)
2	48	5,450	2	4	55 (1,500)
2 1/2	48	5,550	2	4	55 (1,500)
3	60	5,680	2	4	55 (1,500)
3 1/2	60	5,800	2	4	55 (1,500)
4	72	6,000	2	5	55 (1,500)
4 1/2	72	6,300	2	5	55 (1,500)
5	84	7,100	2	5	55 (1,500)
5 1/2	84	7,400	2	5	55 (1,500)
6	84	7,700	2	5	55 (1,500)

Weight is subject to change. Bolt-on edges and side cutters included.

HEAVY-HDO/SCALLOPED

CAPACITY YD ³	WIDTH IN	ESTIMATED GA WEIGHT LBS	NO. OF CYLINDERS	CYLINDER BORE	MAX MATERIAL DENSITY LBS/FT ³ (LBS/YRD)
1 1/2	48	5,500	2	4	130 (3,500)
2	48	5,600	2	4	130 (3,500)
2 1/2	48	5,700	2	4	130 (3,500)
3	60	5,800	2	4	130 (3,500)
3 1/2	60	6,200	2	4	130 (3,500)
4	72	6,300	2	5	130 (3,500)
4 1/2	72	6,700	2	5	130 (3,500)
5	84	7,000	2	5	130 (3,500)
5 1/2	84	7,500	2	5	130 (3,500)
6	84	8,000	2	5	130 (3,500)

Weight is subject to change. Bolt-on edges and side cutters included.

BCS3

MEDIUM/LIGHT Common sizes listed, custom weights and capacities available up to and over 30 yd³ capacity.

CAPACITY YD ³	WIDTH IN	ESTIMATED GA WEIGHT LBS	NO. OF CYLINDERS	CYLINDER BORE	MATERIAL DENSITY
7	84	TBD	4	4	Low density
8	84	TBD	4	4	Low density
9	96	TBD	4	4	Low density
10	96	TBD	4	5	Low density
15	120	TBD	4	5	Low density
20	144	TBD	4	5	Low density
25	144	TBD	4	5	Low density

Weight is subject to change. Bolt-on edges available in option.

MEDIUM Common sizes listed, custom weights and capacities available up to and over 30 yd³ capacity.

CAPACITY YD ³	WIDTH IN	ESTIMATED GA WEIGHT LBS	NO. OF CYLINDERS	CYLINDER BORE	MAX MATERIAL DENSITY LBS/FT ³ (LBS/YRD)
5	84	TBD	4	4	55 (1,500)
6	84	TBD	4	4	55 (1,500)
7	84	TBD	4	4	55 (1,500)
8	84	TBD	4	5	55 (1,500)
9	96	TBD	4	5	55 (1,500)
10	96	TBD	4	5	55 (1,500)
15	120	TBD	4	5	55 (1,500)
20	144	TBD	4	5	55 (1,500)
25	144	TBD	4	5	55 (1,500)

Weight is subject to change. Bolt-on edges and side cutters included.

HEAVY-HDO/SCALLOPED

CAPACITY YD ³	WIDTH IN	ESTIMATED GA WEIGHT LBS	NO. OF CYLINDERS	CYLINDER BORE	MAX MATERIAL DENSITY LBS/FT ³ (LBS/YRD)
3	60	TBD	4	4	130 (3,500)
4	84	TBD	4	5	130 (3,500)
7	84	TBD	4	5	130 (3,500)

Weight is subject to change. Bolt-on edges and side cutters included.



BATEMAN

CLAMSHELL BUCKET

BCS3

Bateman Clamshell Buckets provide the best solution for loading, re-handling & digging. Our Hydraulic Clamshell Buckets come in light, medium & heavy-duty models with either open or closed back designs.

Heavy-Duty Bearing Rotators.

360 Degrees of Continuous Rotation.

High-Abrasion Resistant Alloy Steel on Leading Edges.

Bolt-on Edges for Extra Wear Protection.

BCS3

MEDIUM/LIGHT Common sizes listed, custom weights and capacities available up to and over 30 yd³ capacity.

CAPACITY YD ³	WIDTH IN	ESTIMATED GA WEIGHT LBS	NO. OF CYLINDERS	CYLINDER BORE	MATERIAL DENSITY
7	84	TBD	4	4	Low density
8	84	TBD	4	4	Low density
9	96	TBD	4	4	Low density
10	96	TBD	4	5	Low density
15	120	TBD	4	5	Low density
20	144	TBD	4	5	Low density
25	144	TBD	4	5	Low density

Weight is subject to change. Bolt-on edges available in option.

MEDIUM Common sizes listed, custom weights and capacities available up to and over 30 yd³ capacity.

CAPACITY YD ³	WIDTH IN	ESTIMATED GA WEIGHT LBS	NO. OF CYLINDERS	CYLINDER BORE	MAX MATERIAL DENSITY LBS/FT ³ (LBS/YRD)
5	84	TBD	4	4	55 (1,500)
6	84	TBD	4	4	55 (1,500)
7	84	TBD	4	4	55 (1,500)
8	84	TBD	4	5	55 (1,500)
9	96	TBD	4	5	55 (1,500)
10	96	TBD	4	5	55 (1,500)
15	120	TBD	4	5	55 (1,500)
20	144	TBD	4	5	55 (1,500)
25	144	TBD	4	5	55 (1,500)

Weight is subject to change. Bolt-on edges and side cutters included.

HEAVY-HDO/SCALLOPED

CAPACITY YD ³	WIDTH IN	ESTIMATED GA WEIGHT LBS	NO. OF CYLINDERS	CYLINDER BORE	MAX MATERIAL DENSITY LBS/FT ³ (LBS/YRD)
3	60	TBD	4	4	130 (3,500)
4	84	TBD	4	5	130 (3,500)
7	84	TBD	4	5	130 (3,500)

Weight is subject to change. Bolt-on edges and side cutters included.



BATEMAN

CLAMSHELL BUCKET

BCS10-15

Bateman Clamshell Buckets provide the best solution for loading, re-handling & digging. Our Hydraulic Clamshell Buckets come in light, medium & heavy-duty models with either open or closed back designs.

Heavy-Duty Bearing Rotators.

360 Degrees of Continuous Rotation.

High-Abrasion Resistant Alloy Steel on Leading Edges.

Bolt-on Edges for Extra Wear Protection.

BCS10

MEDIUM/LIGHT

CAPACITY YD ³	WIDTH IN	ESTIMATED GA WEIGHT LBS	NO. OF CYLINDERS	CYLINDER BORE	MATERIAL DENSITY
1/2	24	TBD	2	3	Medium density
3/4	24	TBD	2	3	Medium density
1	36	TBD	2	3	Medium density
1 1/4	36	TBD	2	3	Medium density

Weight is subject to change. Optional bolt-on edges and side cutters available.

BCS15

MEDIUM/LIGHT

CAPACITY YD ³	WIDTH IN	ESTIMATED GA WEIGHT LBS	NO. OF CYLINDERS	CYLINDER BORE	MATERIAL DENSITY
1	48	TBD	2	3.5	Low density
1 1/4	48	TBD	2	3.5	Low density
1 1/2	48	TBD	2	3.5	Low density
2	48	TBD	2	3.5	Low density
2 1/2	60	TBD	2	3.5	Low density
3	60	TBD	2	3.5	Low density

Weight is subject to change. Optional bolt-on edges and side cutters available.

MEDIUM

CAPACITY YD ³	WIDTH IN	ESTIMATED GA WEIGHT LBS	NO. OF CYLINDERS	CYLINDER BORE	MAX MATERIAL DENSITY LBS/FT ³ (LBS/YRD)
1	48	3,800	2	3.5	55 (1,500)
1 1/2	48	4,050	2	3.5	55 (1,500)
2	48	4,200	2	3.5	55 (1,500)
2 1/2	60	4,400	2	3.5	55 (1,500)
3	60	4,500	2	3.5	55 (1,500)

Weight is subject to change. Bolt-on edges and side cutters included.

HEAVY-HDO/SCALLOPED

CAPACITY YD ³	WIDTH IN	ESTIMATED GA WEIGHT LBS	NO. OF CYLINDERS	CYLINDER BORE	MAX MATERIAL DENSITY LBS/FT ³ (LBS/YRD)
1	48	4,000	2	3.5	130 (3,500)
1 1/2	48	4,200	2	3.5	130 (3,500)
2	48	4,400	2	3.5	130 (3,500)
2 1/2	60	4,600	2	3.5	130 (3,500)
3	60	5,000	2	3.5	130 (3,500)

Weight is subject to change. Bolt-on edges and side cutters included.

DEMOLITION MAGNET GRAPPLE

DMG SERIES



The Bateman Demolition Magnet Grapple is one of our most innovative all-in-one attachments. It combines the strength and versatility of a Bateman Demolition Grapple with the added power of a durable magnet—allowing you

to handle, sort, and extract valuable ferrous materials without switching attachments. This grapple is designed to reduce labor costs and maximize your return on ferrous metal recovery.

MODEL	MACHINE CLASS	TINE CONFIG.	GENERATOR MIN. KW	MAGNET SIZE IN (MM)	WEIGHT LBS (KG)	WIDTH IN (MM)	HEIGHT IN (MM)	JAW OPENING IN (MM)
DMG150-4/3-6kW	150	4/3	6	26.5 x 36 (673 x 914)	4,221 (1,915)	37 (940)	47 (1,194)	84 (2,134)
DMG200-4/3-6kW	200	4/3	6	26.5 x 36 (673 x 914)	4,662 (2,115)	37 (940)	51 (1,295)	88 (2,235)
DMG300-4/3-9kW	300	4/3	9	32.625 x 49.5 (829 x 1,257)	6,865 (3,114)	51 (1,295)	51.5 (1,308)	90 (2,286)

This information is subject to change without notice.

MAGNET BUCKET

BMB SERIES



Dig, sort, demolish, and magnetize—do it all with the multi-purpose Bateman Magnet Bucket. Engineered for maximum versatility, this attachment is purpose-built for efficient separation of ferrous materials in demanding

job site conditions. The fully protected supply wires enhance durability and reduce downtime, ensuring long-lasting performance. Optional thumbs are available upon request to further expand your handling capabilities.

MODEL	MACHINE CLASS	GENERATOR MIN. KW	MAGNET SIZE IN (MM)	WEIGHT LBS (KG)	BUCKET WIDTH IN (MM)	BUCKET HEIGHT IN (MM)	TIP RADIUS IN (MM)
BMB150-6kW	150	6	26.5 x 36 (673 x 914)	3,000 (1,361)	37 (940)	51.75	58 (1,463)
BMB200-6kW	200	6	26.5 x 36 (673 x 914)	3,719 (1,687)	37 (940)	51.75	61 (1,545)
BMB250-9kW	250	9	32.625 x 49.5 (829 x 1,257)	4,655 (2,164)	51 (1,295)	53.5	62 (1,568)
BMB300-9kW	300	9	32.625 x 49.5 (829 x 1,257)	5,959 (2,703)	51 (1,295)	60.25	66 (1,670)

This information is subject to change without notice.

GENERATORS



Bateman hydraulic generator kits are purpose-built and machine-specific, enabling quick excavator conversion installations and efficient material handling for scrap and recycling applications. These kits offer several key benefits, including adjustable power output limits, adjustable torque control, six selectable lift/drop operator modes, an integrated real-time performance display, and a replaceable short-circuit protection device.

Bateman also remains a leader in the scrap industry, offering the most reliable and high-performing diesel-powered generators on the market. All Bateman diesel generator kits are supplied with cables and controls, and can be paired with Bateman's range of attachments, including the Mag-Grab, Demo-Mag, Bucket Mag, or Scrap Mag, for enhanced operational efficiency.

Ranges from 9kW - 30kW

Most reliable on the market

Hydraulic models can detect equipment failure

All diesel models include cables & control



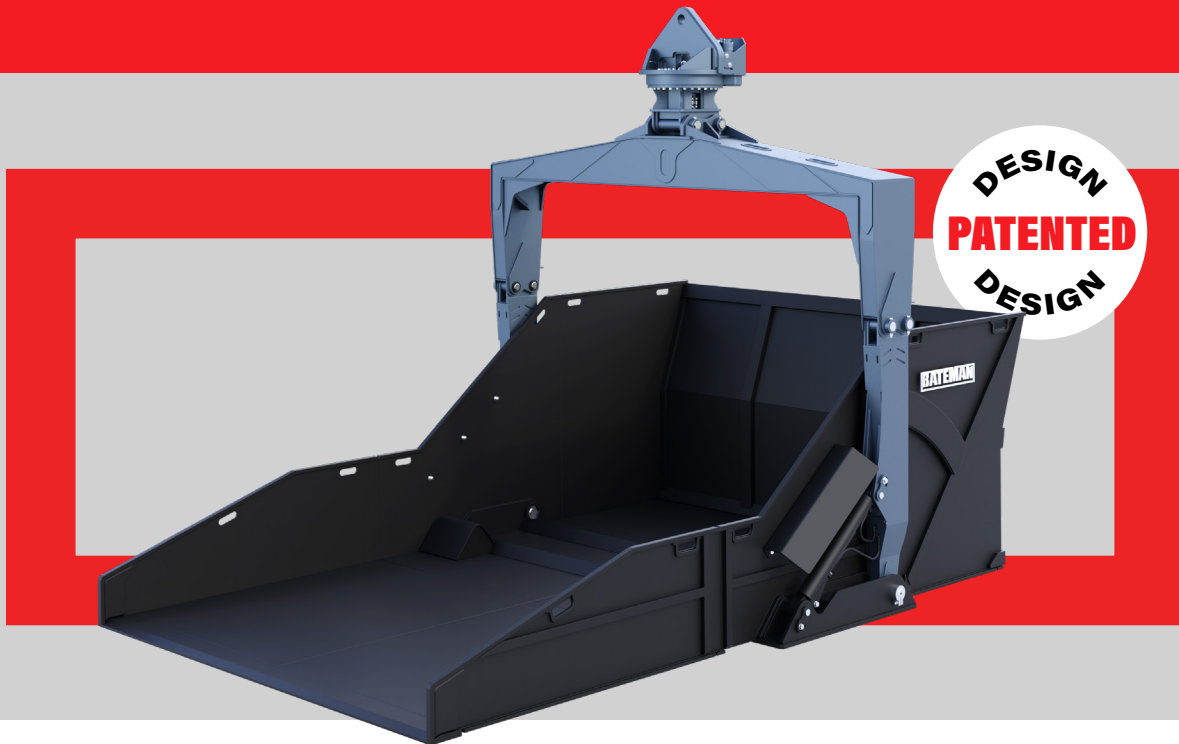
DIESEL GENERATORS

		9KW MAGGEN	9KW MAGGEN	15KW MAGGEN	20KW MAGGEN	30KW MAGGEN
Generator output	KW	9	9	15	20	30
Length	IN (MM)	41 (1,041)	49 (1,245)	49 (1,245)	56 (1,422)	67 (1,702)
Width	IN (MM)	23 (584)	23 (584)	23 (584)	28 (711)	32 (813)
Height	IN (MM)	32 (813)	35 (889)	35 (889)	42 (1,067)	42 (1,067)
Controller		100% duty cycle electronic	100% duty cycle electronic	100% duty cycle electronic	100% duty cycle electronic	100% duty cycle electronic
Oper. cond.		Air cooled	Liquid cooled	Liquid cooled	Liquid cooled	Liquid cooled
Max RPM		3,600	3,000	3,000	3,000	2,500
Weight	LBS (KG)	650 (295)	790 (358)	800 (363)	950 (431)	1,800 (816)
Fuel type		Gas	Diesel	Diesel	Diesel	Diesel

HYDRAULIC GENERATORS

		9KW HYDGEN	15KW HYDGEN	20KW HYDGEN	30KW HYDGEN
Generator output	KW	9 kW	15 kW	20 kW	30 kW
Length	IN (MM)	30 (762)	31 (787)	36 (914)	37 (940)
Width	IN (MM)	15 (381)	15 (381)	16 (406)	17 (432)
Height	IN (MM)	18 (457)	18 (457)	21 (533)	23 (584)
Number of Poles		4	4	4	4
Magnet size	IN (MM)	24 - 40 (610 - 1,016)	40 - 57 (1,016 - 1,448)	57 - 67 (1,016 - 1,702)	60 - 78 (1,524 - 1,981)
Weight	LBS (KG)	210 (95)	250 (113)	250 (113)	350 (159)

MATERIAL HANDLING SKIP PAN



The Bateman material handling skip pan is packed with features to boost productivity, safety, and efficiency. Its 360-degree continuous rotation gives operators unmatched maneuverability in tight or hard-to-reach areas. Plus, it's built for full truck access—allowing direct unloading right into the pan for faster, smoother operations, and no spilling.

360° continuous rotation capability.

Dual motor rotator, ensuring smooth and seamless rotation.

Constructed from abrasive-resistant materials.

45° dumping angle.

Equipped with two 6" cylinders, providing the necessary power and stability to handle heavy loads.



**SCAN TO VIEW
OUR SKIP PAN
IN ACTION.**



WASTE SORTING GRAPPLE

BSG-W SERIES



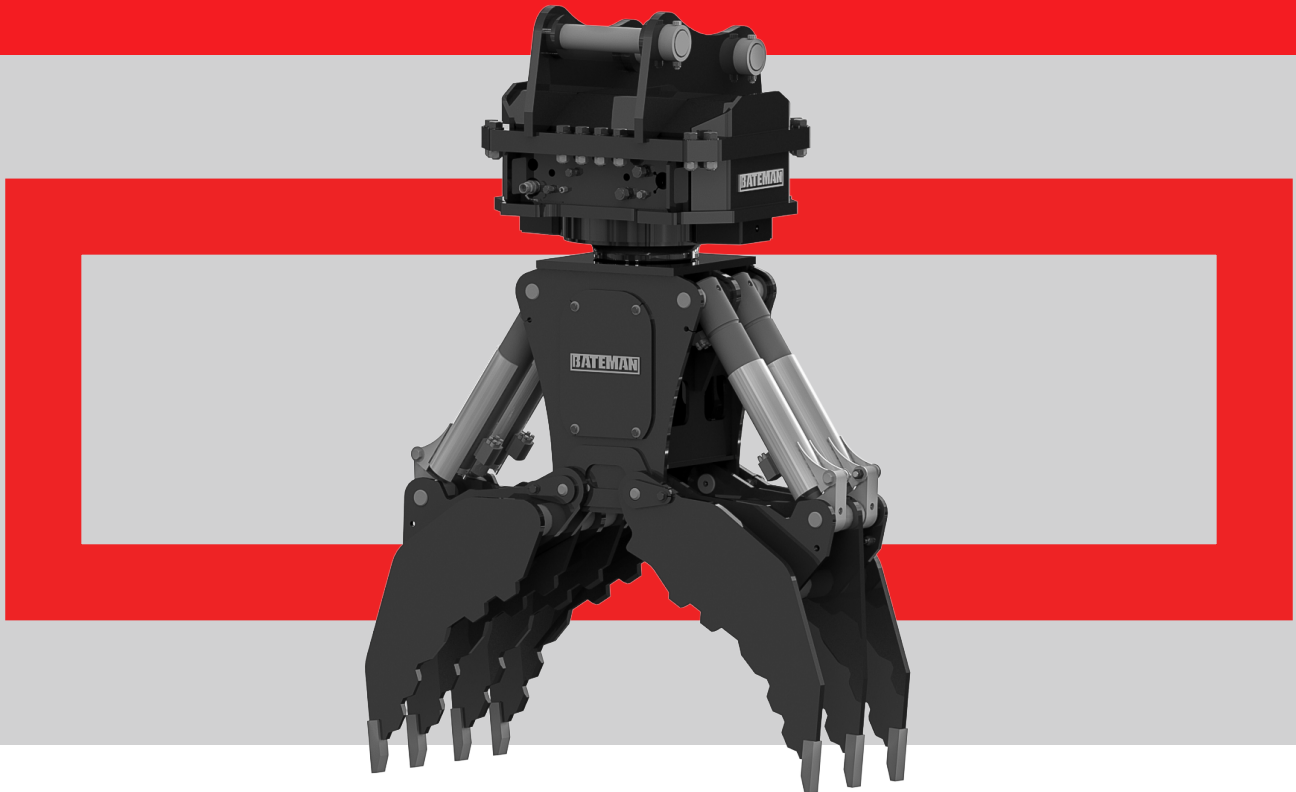
The Bateman Waste Sorting Grapple is built for versatility—ideal for demolition, sorting, and loading applications. Its rotating design features heavy-duty, fully protected cylinders and hoses,

a robust frame, and optional bolt-on sides for added flexibility. Engineered to handle demolition debris, construction material, and waste, it's the reliable choice for demanding jobs.

MODEL	MACHINE CLASS T	MAX OPENING IN (MM)	WIDTH IN (MM)	TINE HEIGHT IN (MM)	VOLUME Y ³ (M ³)	FORCE LBF (KN)	ROTATION	WEIGHT LBS (KG)
BSG-05W	5 - 9	62 (1,575)	28 (711)	18 (457)	0.4 (0.3)	5,620 (25)	MR75	1,000 (454)
BSG-07W	7 - 12	70 (1,778)	28 (711)	20.5 (521)	0.4 (0.3)	7,868 (35)	MR75	1,350 (612)
BSG-10W	10 - 16	70 (1,778)	30 (762)	21 (533)	0.5 (0.38)	10,116 (45)	MR160	1,500 (680)
BSG-15W	15 - 22	75 (1,905)	36 (914)	33.5 (851)	0.5 (0.4)	12,364 (55)	MR200	2,900 (1,315)
BSG-25W	25 - 38	85 (2,159)	44 (1,118)	34 (864)	0.8 (0.6)	17,985 (80)	MR300	3,400 (1,542)
BSG-30W	30 - 50	92 (2,337)	49 (1,245)	25.5 (648)	1.6 (1.25)	20,233 (90)	MR300	4,125 (1,871)
BSG-40W	40 - 65	112 (2,845)	59 (1,499)	30 (762)	2 (1.5)	24,729 (110)	MR400	5,175 (2,347)

WOOD PULVERIZER GRAPPLE

BWPG SERIES



The Bateman Wood Pulveriser Grapple is engineered to deliver power, precision, and durability in the toughest working environments in the recycling industry.

Equipped with the 200 Series Manipulating Rotator, it offers unlimited rotation for optimal maneuverability and maximum efficiency on the job site.

200 SERIES ROTATOR

Rotation		Unlimited
Lifting Capacity	LBS (KG)	112,000 (50,802)
Max Pressure	PSI (BAR)	3,000 (207)
Max Torque	LB-IN (NM)	175,200 (19,795)
Rotator Flow	GPM (L/MIN)	30 (114)
Rotation Speed	RPM	18
Weight (Rotator Only)	LBS (KG)	770 (349)

This information is subject to change without notice.

GC20T-060

Open	IN (MM)	62 (1574)
Cylinder Bore	IN (MM)	3.5 (89)
Lock Valve on Cylinders		Excluded
Cylinder Max. Pressure	PSI (BAR)	5,000 (345)
Weight (Grapple Only)	LBS (KG)	3,000 (1,361)
Crush Force	LBS (KG)	112,000 (50,802)
Bypass Distance	IN (MM)	5 (121)



BATEMAN

DEMOLITION CONTRACTOR GRAPPLE

BCG SERIES

Introducing our newly redesigned demolition contractor grapple, engineered for superior performance and flexibility. With enhanced clamping force and a customized sleeve kit for easy installation, this grapple is a versatile attachment for any machine in its class. Its heavy-duty casted tips ensure durability and can be easily replaced, while the sharp design enhances penetration and capacity. Ideal for demolition, scrap industries, and construction, this grapple features wear plate packages and hard-facing options. Compatible with pin-on or coupler setups, it offers a streamlined mechanical design at an affordable price, making it a must-have attachment.

Improved Clamping Force.

**Custom Sleeve Kit for
Easy Installation.**

**Heavy Duty Casted &
Replaceable Tips for Longevity.**

**Wear Plate Packages &
Hard Facing Options.**

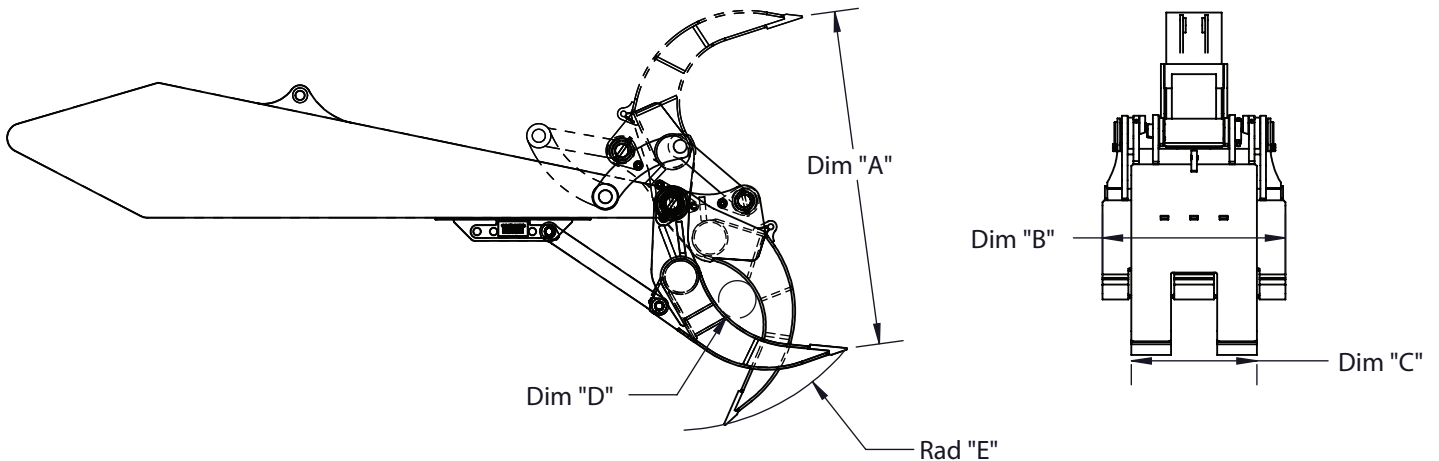
Streamlined Mechanical Design.

DEMOLITION CONTRACTOR GRAPPLE

BCG SERIES

MODEL		BCG20-2/3	BCG30-2/3	BCG40-2/3	BCG50-2/3	BCG70-2/3	BCG100-2/3	BCG140-2/3
# of Tines Front/Back		2/3	2/3	2/3	2/3	2/3	2/3	2/3
Machine Class	LBS (T)	20-30,000 (9-14)	25-35,000 (11-16)	35-46,000 (16-21)	46-65,000 (21-29)	65-88,000 (29-40)	88-111,000 (40-50)	115-180,000 (52-90)
Approx Weight	LBS (KG)	640 (290)	1,850 (840)	2,900 (1,350)	4,100 (1,860)	5,200 (2,360)	6,500 (2,948)	8,800 (3,992)
Tip to Tip Max Opening (A)	IN (MM)	68 (1727)	104 (2,644)	114 (2,896)	120 (3,048)	126 (3,200)	136 (3,455)	160 (4,065)
Back Jaw Width (B)	IN (MM)	26 (660)	34 1/2 (876)	44 (1,118)	49 1/2 (1,257)	52 (1,321)	58 (1,473)	62 (1,575)
Front Jaw Width (C)	IN (MM)	16 (406)	20 1/2 (521)	29 3/4 (756)	34 (864)	36 (914)	40 (1,016)	43 (1,093)
Closed Opening (D)	IN (MM)	6 (152)	6 5/8 (168)	7 3/4 (196)	10 1/4 (260)	11 1/2 (288)	12 (304)	16 (406)
Rad (E)	IN (MM)	34 (864)	52 (1,321)	57 1/2 (1,461)	61 1/2 (1,562)	63 (1,600)	68 (1,727)	80 (2,032)
For Use With Pingrabber		N	N	Y	Y	Y	Y	See notes
Sleeve Kit		N	Y	Y	Y	Y	Y	N

NOTES Not all pin grabbers will work in the same class range. Sleeve kits are machine specific. Please check with Bateman Manufacturing for sleeve kit and pin grabber compatibility All specs are subject to change upon final design considerations.
*** 3 OVER 4 configurations available upon request



WOODRAKE GRAPPLE

WR SERIES



The BATEMAN Woodrake (WR) Series is built to handle the toughest of forestry applications. Completely redesigned for increased DURABILITY and PERFORMANCE. With its boxed tines, enlarged pins, high pressure cylinders and lower center of gravity, our grapple is smoother to run and will provide longer life increasing your up-time. Add to that our heavy-duty control valve, installed directly on the core, permitting the grapple to run from a single circuit avoiding costly hydraulic kit installation. Our cylinders are equipped with counter balance valves for increased operation safety. The WR Series grapple can also be easily outfitted with a Hultdins SuperSaw 350E, 555S, or 650S.

Whether grubbing, working on a ROW, feeding a grinder or chipper, or cleaning up a landing, the WR Series of grapples can handle it all.

Boxed Tines in 3/2 and 4/3 Configurations.

Lower Profile Grapple.

Integrated Simultaneous Action Control Valve.

Standard Counter Balance Valves on Cylinders.

WOODRAKE GRAPPLE

WR SERIES

		BPG200		BPG300	
Machine Class	T	13-40		25-40	
Cylinder Bore	IN	3 1/2		4	
Cylinder Pressure	PSI	5000		5000	
Max Opening	IN	72		72	
Area	FT ²	3.90		6.00	
Height (No Rotator)	IN	36 1/2		44 1/2	
Configurations		3/2	4/3	3/2	4/3
Width	IN	25 1/8	35 1/2	28 3/4	39 1/2
Weight (No Rotator)	LBS	1500	1620	2350	2550
Saw Options		SB555/SB555+ SB650/SB650+		SB555/SB555+ SB650/SB650+	
Manipulate Rotator Options		MR200 (810 lbs) MR300 (1500 lbs)		MR300 (1500 lbs)	
Dangle Rotator Options		DR100 (460 lbs) DR160 (410 lbs) DR200 (530 lbs)		DR160 (410 lbs) DR200 (530 lbs)	

BATEMAN

1-705-487-5020

FOLLOW US     



BATEMANMANUFACTURING.COM